

18/05363/FUL
Scale 1/6000



Notes:
 1. The site plan is a conceptual illustration of the proposed development and is not intended to be used for construction purposes. It is subject to change without notice.
 2. The site plan is based on the information provided by the client and is not intended to be used for construction purposes. It is subject to change without notice.
 3. The site plan is based on the information provided by the client and is not intended to be used for construction purposes. It is subject to change without notice.
 4. The site plan is based on the information provided by the client and is not intended to be used for construction purposes. It is subject to change without notice.
 5. The site plan is based on the information provided by the client and is not intended to be used for construction purposes. It is subject to change without notice.

- Outline Addition Boundary
 - Existing Phase 1 Boundary
 - Existing Phase 1, 2 and 3 shown on Plan No. 02018, JLP, 03



No. 02018, JLP, 03
 Date: 03/18/10
 Project: Abbey Barn South
 Scale: 1:1000
 Author: JTP
 Date: 03/18/10
 Project: Abbey Barn South
 Scale: 1:1000
 Author: JTP

Berkeley Homes Western Ltd
 Berkeley
 1000 17th Street
 Berkeley, CA 94710
 415.841.1100
 www.berkeleyhomes.com

jtp
 1000 17th Street
 Berkeley, CA 94710
 415.841.1100
 www.jtp.com

Abbey Barn South
 Illustrative Masterplan
 02018, JLP, 03
 03/18/10
 Scale: 1:1000
 Author: JTP

Notes:
 1. The site is shown in grey on the map.
 2. The site is shown in grey on the map.
 3. The site is shown in grey on the map.
 4. The site is shown in grey on the map.
 5. The site is shown in grey on the map.
 6. The site is shown in grey on the map.
 7. The site is shown in grey on the map.
 8. The site is shown in grey on the map.
 9. The site is shown in grey on the map.
 10. The site is shown in grey on the map.

Outline Application Boundary

- ✓ **Vehicle Access Point**
- ✓ **Developable Area ***
- ✓ **Open Space**

* Areas shown in grey on the map are those which are shown on the map as being available for development (i.e. not shown as being reserved for other purposes such as open space, amenity space, highway, footway, cycleway and non-developable private space).



Project Name	Abbey Barn South
Client	Berkeley Homes Western Ltd
Project No.	12/0118
Site No.	12/0118
Scale	1:1000
Author	JTP
Check	JTP
Drawn	JTP
Date	12/01/18
Sheet No.	1 of 1

jtpp
 JTP Planning
 12/0118
 12/01/18

Berkeley
 Berkeley Homes Western Ltd

Abbey Barn South

Project Name: Abbey Barn South
 Client: Berkeley Homes Western Ltd
 Project No: 12/0118
 Site No: 12/0118
 Scale: 1:1000
 Author: JTP
 Check: JTP
 Drawn: JTP
 Date: 12/01/18
 Sheet No: 1 of 1

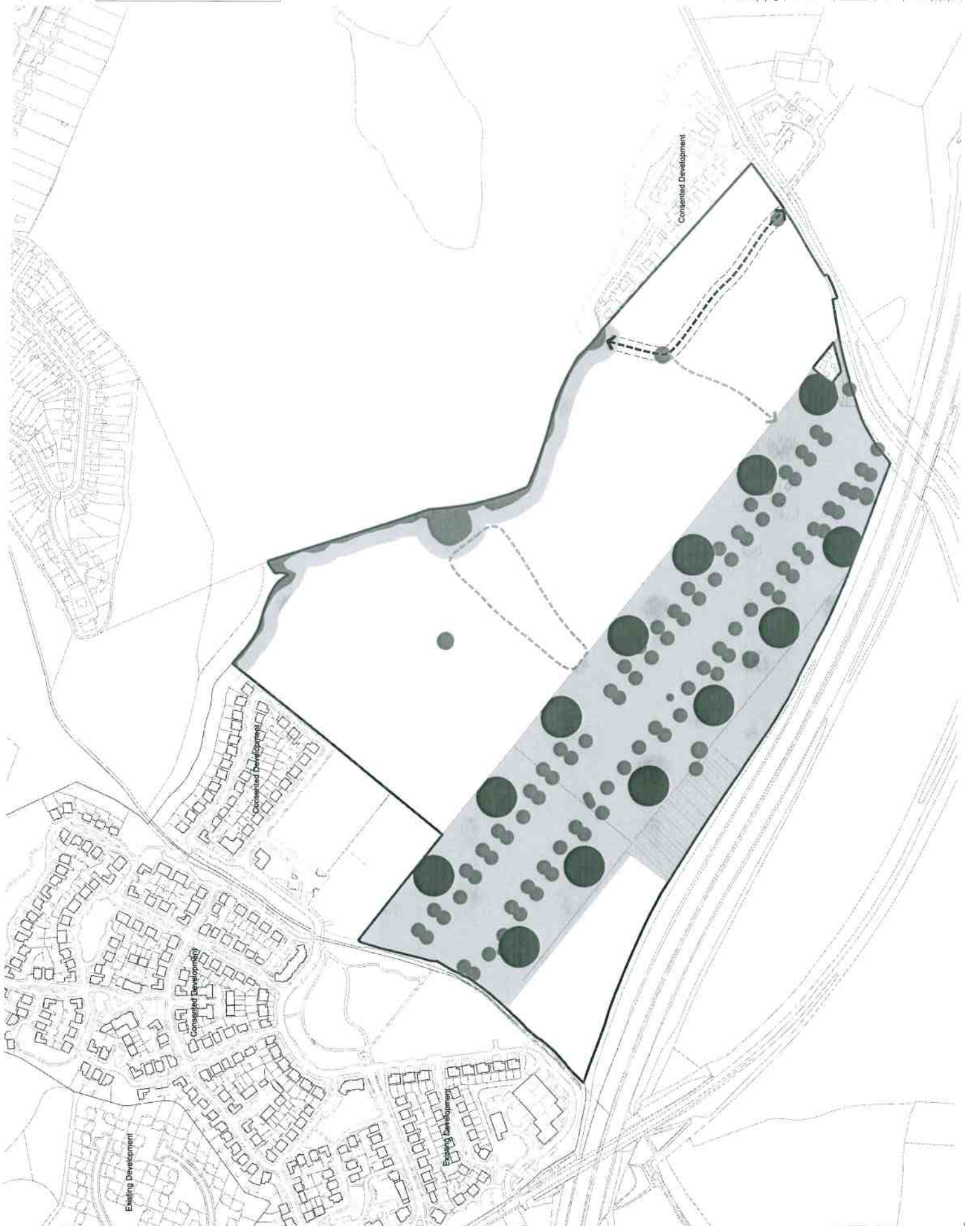
Proposed Plan: Land Use

Scale: 1:1000
 Date: 12/01/18
 Sheet No: 1 of 1

Notes:
 1. The site is bounded by the Outer Application Boundary.
 2. The site is bounded by the Outer Application Boundary.
 3. The site is bounded by the Outer Application Boundary.
 4. The site is bounded by the Outer Application Boundary.
 5. The site is bounded by the Outer Application Boundary.
 6. The site is bounded by the Outer Application Boundary.
 7. The site is bounded by the Outer Application Boundary.
 8. The site is bounded by the Outer Application Boundary.
 9. The site is bounded by the Outer Application Boundary.
 10. The site is bounded by the Outer Application Boundary.

Outer Application Boundary

- Relined trees are modelled
- Relined flower beds
- 15 trees/bushes for Arco's Woodland
- Primary green link
- Secondary green link
- Central street green link (not to be implemented by future owners/occupiers)
- Public Open Space
- Contours / Alignments



Item	Code	Color
1. Outer Application Boundary	01	Black
2. Relined trees are modelled	02	Dark Green
3. Relined flower beds	03	Light Green
4. 15 trees/bushes for Arco's Woodland	04	Medium Green
5. Primary green link	05	Dark Green
6. Secondary green link	06	Medium Green
7. Central street green link (not to be implemented by future owners/occupiers)	07	Light Green
8. Public Open Space	08	Light Green
9. Contours / Alignments	09	Grey

PLANNING

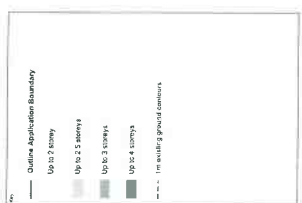
Berkeley Homes Western Ltd
 Berkeley
 Gloucestershire GL8 3PE

Abbey Barn South

Parameter Plan: Landscape and Open Space

Scale: 1:1000
 Date: 10/08/2018
 Author: JTP

Notes:
 1. The maximum height of any building on the site shall not exceed the height of the tallest building on the site.
 2. The maximum height of any building on the site shall not exceed the height of the tallest building on the site.
 3. The maximum height of any building on the site shall not exceed the height of the tallest building on the site.
 4. The maximum height of any building on the site shall not exceed the height of the tallest building on the site.
 5. The maximum height of any building on the site shall not exceed the height of the tallest building on the site.



1. 1500 0.0	1500 0.0	1500 0.0
2. 1500 0.0	1500 0.0	1500 0.0
3. 1500 0.0	1500 0.0	1500 0.0
4. 1500 0.0	1500 0.0	1500 0.0
5. 1500 0.0	1500 0.0	1500 0.0
6. 1500 0.0	1500 0.0	1500 0.0
7. 1500 0.0	1500 0.0	1500 0.0
8. 1500 0.0	1500 0.0	1500 0.0
9. 1500 0.0	1500 0.0	1500 0.0
10. 1500 0.0	1500 0.0	1500 0.0
11. 1500 0.0	1500 0.0	1500 0.0
12. 1500 0.0	1500 0.0	1500 0.0
13. 1500 0.0	1500 0.0	1500 0.0
14. 1500 0.0	1500 0.0	1500 0.0
15. 1500 0.0	1500 0.0	1500 0.0
16. 1500 0.0	1500 0.0	1500 0.0
17. 1500 0.0	1500 0.0	1500 0.0
18. 1500 0.0	1500 0.0	1500 0.0
19. 1500 0.0	1500 0.0	1500 0.0
20. 1500 0.0	1500 0.0	1500 0.0
21. 1500 0.0	1500 0.0	1500 0.0
22. 1500 0.0	1500 0.0	1500 0.0
23. 1500 0.0	1500 0.0	1500 0.0
24. 1500 0.0	1500 0.0	1500 0.0
25. 1500 0.0	1500 0.0	1500 0.0
26. 1500 0.0	1500 0.0	1500 0.0
27. 1500 0.0	1500 0.0	1500 0.0
28. 1500 0.0	1500 0.0	1500 0.0
29. 1500 0.0	1500 0.0	1500 0.0
30. 1500 0.0	1500 0.0	1500 0.0
31. 1500 0.0	1500 0.0	1500 0.0
32. 1500 0.0	1500 0.0	1500 0.0
33. 1500 0.0	1500 0.0	1500 0.0
34. 1500 0.0	1500 0.0	1500 0.0
35. 1500 0.0	1500 0.0	1500 0.0
36. 1500 0.0	1500 0.0	1500 0.0
37. 1500 0.0	1500 0.0	1500 0.0
38. 1500 0.0	1500 0.0	1500 0.0
39. 1500 0.0	1500 0.0	1500 0.0
40. 1500 0.0	1500 0.0	1500 0.0
41. 1500 0.0	1500 0.0	1500 0.0
42. 1500 0.0	1500 0.0	1500 0.0
43. 1500 0.0	1500 0.0	1500 0.0
44. 1500 0.0	1500 0.0	1500 0.0
45. 1500 0.0	1500 0.0	1500 0.0
46. 1500 0.0	1500 0.0	1500 0.0
47. 1500 0.0	1500 0.0	1500 0.0
48. 1500 0.0	1500 0.0	1500 0.0
49. 1500 0.0	1500 0.0	1500 0.0
50. 1500 0.0	1500 0.0	1500 0.0
51. 1500 0.0	1500 0.0	1500 0.0
52. 1500 0.0	1500 0.0	1500 0.0
53. 1500 0.0	1500 0.0	1500 0.0
54. 1500 0.0	1500 0.0	1500 0.0
55. 1500 0.0	1500 0.0	1500 0.0
56. 1500 0.0	1500 0.0	1500 0.0
57. 1500 0.0	1500 0.0	1500 0.0
58. 1500 0.0	1500 0.0	1500 0.0
59. 1500 0.0	1500 0.0	1500 0.0
60. 1500 0.0	1500 0.0	1500 0.0
61. 1500 0.0	1500 0.0	1500 0.0
62. 1500 0.0	1500 0.0	1500 0.0
63. 1500 0.0	1500 0.0	1500 0.0
64. 1500 0.0	1500 0.0	1500 0.0
65. 1500 0.0	1500 0.0	1500 0.0
66. 1500 0.0	1500 0.0	1500 0.0
67. 1500 0.0	1500 0.0	1500 0.0
68. 1500 0.0	1500 0.0	1500 0.0
69. 1500 0.0	1500 0.0	1500 0.0
70. 1500 0.0	1500 0.0	1500 0.0
71. 1500 0.0	1500 0.0	1500 0.0
72. 1500 0.0	1500 0.0	1500 0.0
73. 1500 0.0	1500 0.0	1500 0.0
74. 1500 0.0	1500 0.0	1500 0.0
75. 1500 0.0	1500 0.0	1500 0.0
76. 1500 0.0	1500 0.0	1500 0.0
77. 1500 0.0	1500 0.0	1500 0.0
78. 1500 0.0	1500 0.0	1500 0.0
79. 1500 0.0	1500 0.0	1500 0.0
80. 1500 0.0	1500 0.0	1500 0.0
81. 1500 0.0	1500 0.0	1500 0.0
82. 1500 0.0	1500 0.0	1500 0.0
83. 1500 0.0	1500 0.0	1500 0.0
84. 1500 0.0	1500 0.0	1500 0.0
85. 1500 0.0	1500 0.0	1500 0.0
86. 1500 0.0	1500 0.0	1500 0.0
87. 1500 0.0	1500 0.0	1500 0.0
88. 1500 0.0	1500 0.0	1500 0.0
89. 1500 0.0	1500 0.0	1500 0.0
90. 1500 0.0	1500 0.0	1500 0.0
91. 1500 0.0	1500 0.0	1500 0.0
92. 1500 0.0	1500 0.0	1500 0.0
93. 1500 0.0	1500 0.0	1500 0.0
94. 1500 0.0	1500 0.0	1500 0.0
95. 1500 0.0	1500 0.0	1500 0.0
96. 1500 0.0	1500 0.0	1500 0.0
97. 1500 0.0	1500 0.0	1500 0.0
98. 1500 0.0	1500 0.0	1500 0.0
99. 1500 0.0	1500 0.0	1500 0.0
100. 1500 0.0	1500 0.0	1500 0.0

PLANNING

Berkley Homes Western Ltd
 Berkeley
 Homes for life

Abbey Barn South

Parameter Plan:
 Building Heights

Scale: 1:1000

Date: 15/03/2018

Sheet: 15 of 15

NOTES:
 1. The site is shown as a single unit for the purposes of this outline application.
 2. The site is shown as a single unit for the purposes of this outline application.
 3. The site is shown as a single unit for the purposes of this outline application.
 4. The site is shown as a single unit for the purposes of this outline application.
 5. The site is shown as a single unit for the purposes of this outline application.
 6. The site is shown as a single unit for the purposes of this outline application.
 7. The site is shown as a single unit for the purposes of this outline application.
 8. The site is shown as a single unit for the purposes of this outline application.
 9. The site is shown as a single unit for the purposes of this outline application.
 10. The site is shown as a single unit for the purposes of this outline application.

Symbol	Description
—	Outline Application Boundary
—	Detailed Phase 1 Application
—	Later phases Berkeley Homes Ltd Ownership

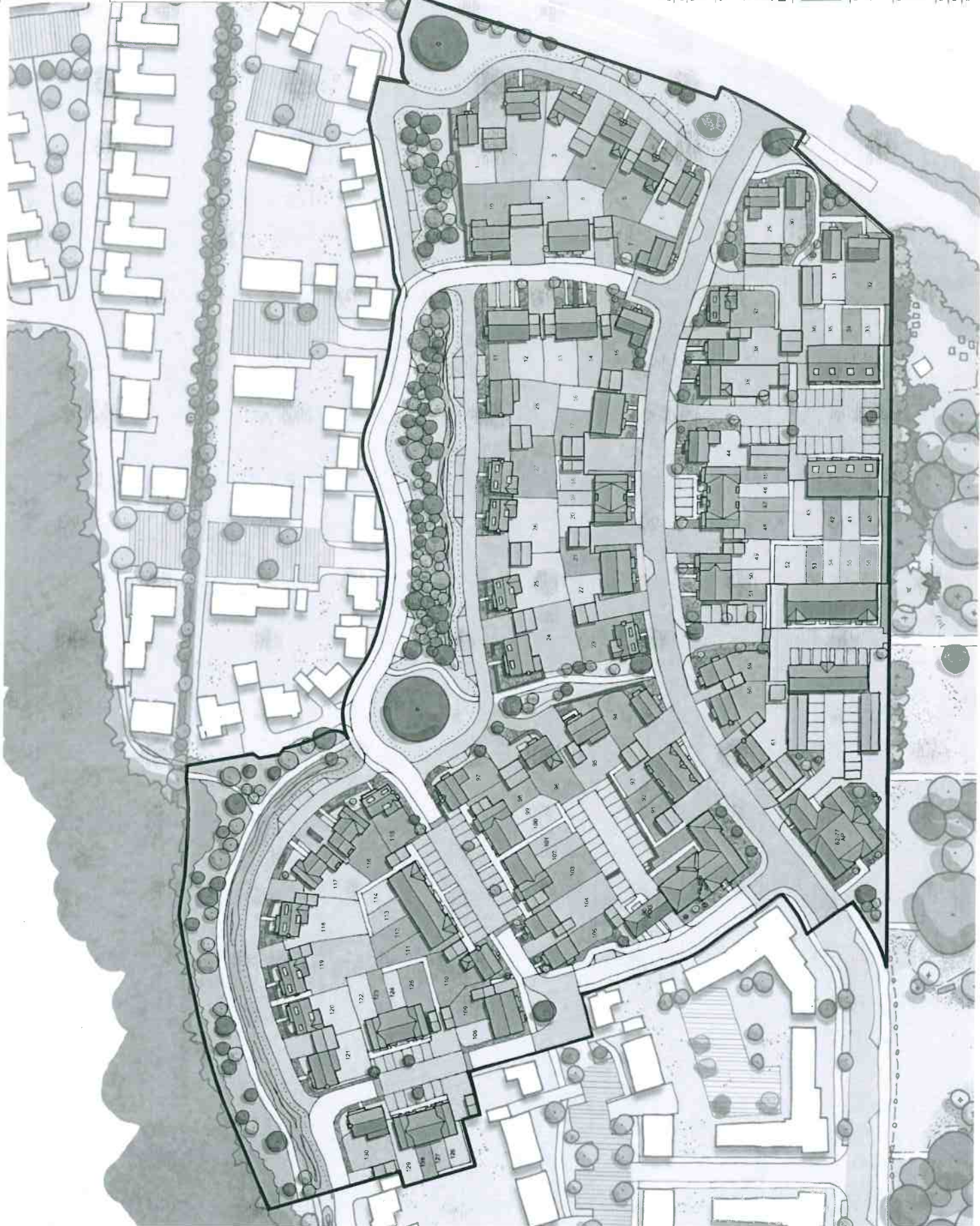


12 15/16 13 15/16 14 15/16 15 15/16 16 15/16 17 15/16 18 15/16 19 15/16 20 15/16 21 15/16 22 15/16 23 15/16 24 15/16 25 15/16 26 15/16 27 15/16 28 15/16 29 15/16 30 15/16 31 15/16 32 15/16 33 15/16 34 15/16 35 15/16 36 15/16 37 15/16 38 15/16 39 15/16 40 15/16 41 15/16 42 15/16 43 15/16 44 15/16 45 15/16 46 15/16 47 15/16 48 15/16 49 15/16 50 15/16 51 15/16 52 15/16 53 15/16 54 15/16 55 15/16 56 15/16 57 15/16 58 15/16 59 15/16 60 15/16 61 15/16 62 15/16 63 15/16 64 15/16 65 15/16 66 15/16 67 15/16 68 15/16 69 15/16 70 15/16 71 15/16 72 15/16 73 15/16 74 15/16 75 15/16 76 15/16 77 15/16 78 15/16 79 15/16 80 15/16 81 15/16 82 15/16 83 15/16 84 15/16 85 15/16 86 15/16 87 15/16 88 15/16 89 15/16 90 15/16 91 15/16 92 15/16 93 15/16 94 15/16 95 15/16 96 15/16 97 15/16 98 15/16 99 15/16 100 15/16	12 15/16 13 15/16 14 15/16 15 15/16 16 15/16 17 15/16 18 15/16 19 15/16 20 15/16 21 15/16 22 15/16 23 15/16 24 15/16 25 15/16 26 15/16 27 15/16 28 15/16 29 15/16 30 15/16 31 15/16 32 15/16 33 15/16 34 15/16 35 15/16 36 15/16 37 15/16 38 15/16 39 15/16 40 15/16 41 15/16 42 15/16 43 15/16 44 15/16 45 15/16 46 15/16 47 15/16 48 15/16 49 15/16 50 15/16 51 15/16 52 15/16 53 15/16 54 15/16 55 15/16 56 15/16 57 15/16 58 15/16 59 15/16 60 15/16 61 15/16 62 15/16 63 15/16 64 15/16 65 15/16 66 15/16 67 15/16 68 15/16 69 15/16 70 15/16 71 15/16 72 15/16 73 15/16 74 15/16 75 15/16 76 15/16 77 15/16 78 15/16 79 15/16 80 15/16 81 15/16 82 15/16 83 15/16 84 15/16 85 15/16 86 15/16 87 15/16 88 15/16 89 15/16 90 15/16 91 15/16 92 15/16 93 15/16 94 15/16 95 15/16 96 15/16 97 15/16 98 15/16 99 15/16 100 15/16
---	---

Berkeley Homes Western Ltd
Berkeley
 City Centre
 Abbey Barn South
 i4p
 127-129, 131-133, 135-137, 139-141, 143-145, 147-149, 151-153, 155-157, 159-161, 163-165, 167-169, 171-173, 175-177, 179-181, 183-185, 187-189, 191-193, 195-197, 199-201, 203-205, 207-209, 211-213, 215-217, 219-221, 223-225, 227-229, 231-233, 235-237, 239-241, 243-245, 247-249, 251-253, 255-257, 259-261, 263-265, 267-269, 271-273, 275-277, 279-281, 283-285, 287-289, 291-293, 295-297, 299-301, 303-305, 307-309, 311-313, 315-317, 319-321, 323-325, 327-329, 331-333, 335-337, 339-341, 343-345, 347-349, 351-353, 355-357, 359-361, 363-365, 367-369, 371-373, 375-377, 379-381, 383-385, 387-389, 391-393, 395-397, 399-401, 403-405, 407-409, 411-413, 415-417, 419-421, 423-425, 427-429, 431-433, 435-437, 439-441, 443-445, 447-449, 451-453, 455-457, 459-461, 463-465, 467-469, 471-473, 475-477, 479-481, 483-485, 487-489, 491-493, 495-497, 499-501, 503-505, 507-509, 511-513, 515-517, 519-521, 523-525, 527-529, 531-533, 535-537, 539-541, 543-545, 547-549, 551-553, 555-557, 559-561, 563-565, 567-569, 571-573, 575-577, 579-581, 583-585, 587-589, 591-593, 595-597, 599-601, 603-605, 607-609, 611-613, 615-617, 619-621, 623-625, 627-629, 631-633, 635-637, 639-641, 643-645, 647-649, 651-653, 655-657, 659-661, 663-665, 667-669, 671-673, 675-677, 679-681, 683-685, 687-689, 691-693, 695-697, 699-701, 703-705, 707-709, 711-713, 715-717, 719-721, 723-725, 727-729, 731-733, 735-737, 739-741, 743-745, 747-749, 751-753, 755-757, 759-761, 763-765, 767-769, 771-773, 775-777, 779-781, 783-785, 787-789, 791-793, 795-797, 799-801, 803-805, 807-809, 811-813, 815-817, 819-821, 823-825, 827-829, 831-833, 835-837, 839-841, 843-845, 847-849, 851-853, 855-857, 859-861, 863-865, 867-869, 871-873, 875-877, 879-881, 883-885, 887-889, 891-893, 895-897, 899-901, 903-905, 907-909, 911-913, 915-917, 919-921, 923-925, 927-929, 931-933, 935-937, 939-941, 943-945, 947-949, 951-953, 955-957, 959-961, 963-965, 967-969, 971-973, 975-977, 979-981, 983-985, 987-989, 991-993, 995-997, 999-1001

Parameter Plot
 Outline and Phase 1 Site Boundaries
 12/15/16
 13/15/16
 14/15/16
 15/15/16
 16/15/16
 17/15/16
 18/15/16
 19/15/16
 20/15/16
 21/15/16
 22/15/16
 23/15/16
 24/15/16
 25/15/16
 26/15/16
 27/15/16
 28/15/16
 29/15/16
 30/15/16
 31/15/16
 32/15/16
 33/15/16
 34/15/16
 35/15/16
 36/15/16
 37/15/16
 38/15/16
 39/15/16
 40/15/16
 41/15/16
 42/15/16
 43/15/16
 44/15/16
 45/15/16
 46/15/16
 47/15/16
 48/15/16
 49/15/16
 50/15/16
 51/15/16
 52/15/16
 53/15/16
 54/15/16
 55/15/16
 56/15/16
 57/15/16
 58/15/16
 59/15/16
 60/15/16
 61/15/16
 62/15/16
 63/15/16
 64/15/16
 65/15/16
 66/15/16
 67/15/16
 68/15/16
 69/15/16
 70/15/16
 71/15/16
 72/15/16
 73/15/16
 74/15/16
 75/15/16
 76/15/16
 77/15/16
 78/15/16
 79/15/16
 80/15/16
 81/15/16
 82/15/16
 83/15/16
 84/15/16
 85/15/16
 86/15/16
 87/15/16
 88/15/16
 89/15/16
 90/15/16
 91/15/16
 92/15/16
 93/15/16
 94/15/16
 95/15/16
 96/15/16
 97/15/16
 98/15/16
 99/15/16
 100/15/16

Notes:
 1. All contractors must take the site and be responsible for taking and protecting
 boundaries.
 2. All operations should be kept clear of the adjacent road.
 3. Any discrepancies between contracts, specifications and site conditions must be
 brought to the attention of the supervising officer.
 4. The design and the work shown are the property of JTP
 5. This drawing is for the proposed works only. It is not intended to be used for
 construction without the written approval of the supervising officer.
 6. JTP accepts no responsibility or liability for any reliance placed on or
 use made of the plan by anyone for purposes other than those stated above.



PN 21/08/18 Planning Submission LV DEC
 Date Description
 Checked By
 Created By

PLANNING

Client
 Berkeley Homes Western Ltd
Berkeley
 Designed for life

Project
 Abbey Barn South

03 25 Green Station Street
 144 000 0333 1700
 www.jtp.co.uk

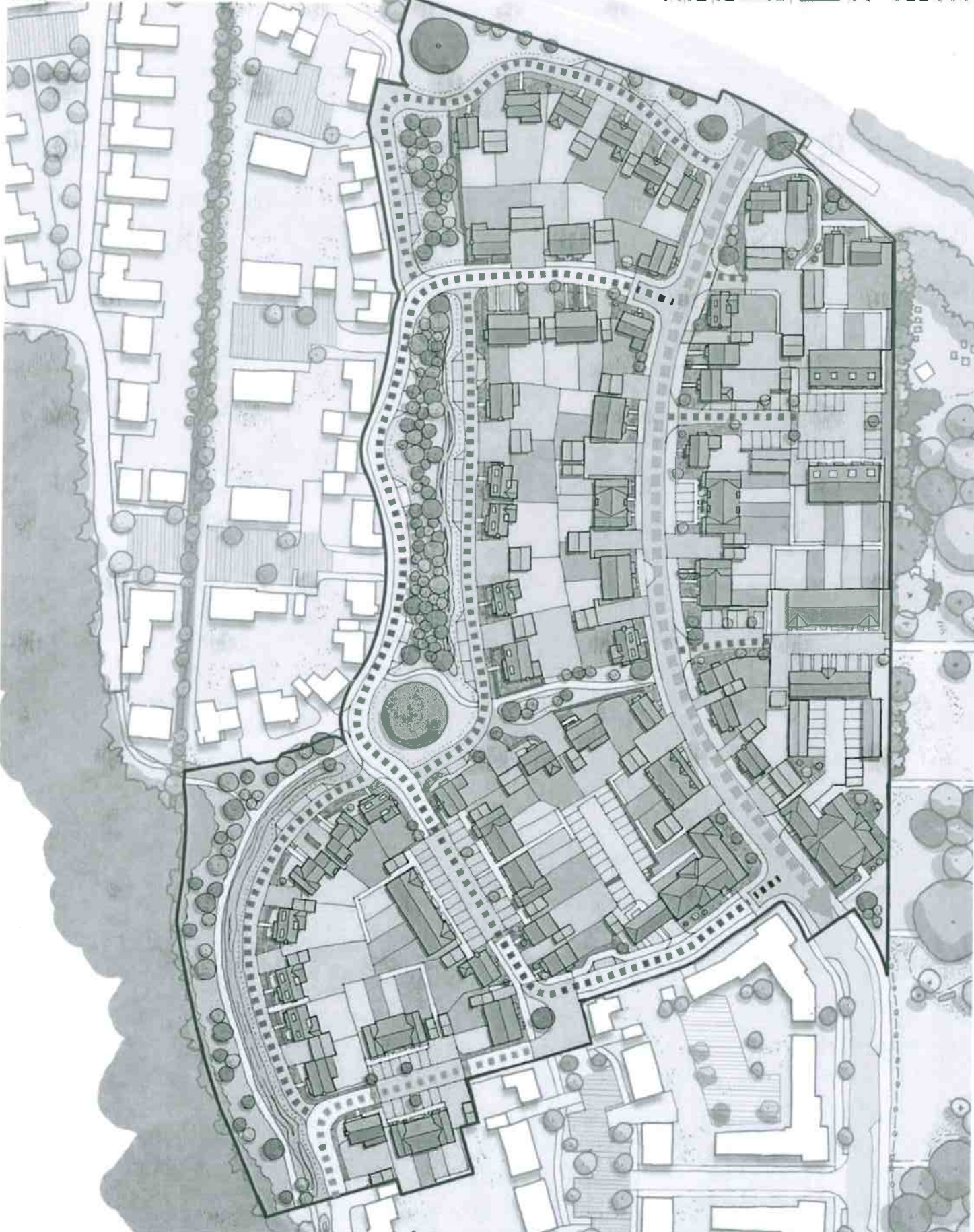
Job Ref: 00918
 Scale: 1:100
 Drawing No: 00918_MP_05 Revision: P4

0 10 20 30 40 50
 1:100 Scale Bar

Drawing Title
**Phase 1
 Proposed Site Plan**

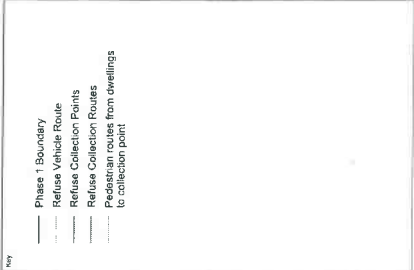
1. This plan is a preliminary design and is not intended to be used for construction. It is subject to change without notice. The client is responsible for ensuring that the plan is used for its intended purpose. The client is also responsible for ensuring that the plan is used in accordance with the relevant laws and regulations.

- 6.5m Main Access Road (Adopted)
- 5.5m Minor Access Road (Adopted)
- 4.8m Access Way (Private)
- 5.5m Shared Surface (Private)
- 4.1m Shared Surface (Private)
- 4.1m Shared Surface/Private Drive (Private)



Project: **Abbey Barn South**
 Client: **Berkeley Homes Western Ltd**
 Designed for: **jtP**
 Planning: **PLANNING**
 Date: 21/09/18 Planning Submission
 Drawn: [Name] / Checked: [Name]
 Scale Bar: 0m 10m 20m
 Drawing No: 00916_MP_09
 Revision: P6
 Project: **Phase 1 Road Adoption Plan**

Notes:
 1. This drawing is for planning purposes only. It is not intended to be used for any other purpose without the written consent of the author.
 2. The client is responsible for providing all necessary information and data for the preparation of this drawing.
 3. The client is responsible for obtaining all necessary permissions and consents from the relevant authorities.
 4. The client is responsible for ensuring that all necessary information and data is provided in a timely and accurate manner.
 5. The client is responsible for ensuring that all necessary information and data is provided in a timely and accurate manner.
 6. The client is responsible for ensuring that all necessary information and data is provided in a timely and accurate manner.
 7. The client is responsible for ensuring that all necessary information and data is provided in a timely and accurate manner.
 8. The client is responsible for ensuring that all necessary information and data is provided in a timely and accurate manner.
 9. The client is responsible for ensuring that all necessary information and data is provided in a timely and accurate manner.
 10. The client is responsible for ensuring that all necessary information and data is provided in a timely and accurate manner.



P3 24/08/18 Planning Submission LV DEC
 Date / Date Description Drawn / Drawn
 Drawing Status
PLANNING
 Client
Berkeley Homes Western Ltd
Berkeley
 Designed for life
 23 St Giles, Sutton Street
 London, EC1V 9DF
 Tel: 020 7493 1170
 www.berkeley.co.uk
 Project
Abbey Barn South
 Drawing File
Phase 1
Refuse Collection Strategy
 Scale @ A1: 1:500 Job Ref: 009118
 Drawing No: 009118_MP_12 Revision: P3
 Scale Bar 0 5 10 15 20 25m

NOTES

1. All work shall be in accordance with the Building Regulations 2010 and the Building Regulations 2010 (Approved Document A) and the Building Regulations 2010 (Approved Document B).

2. The drawings shall be in accordance with the Building Regulations 2010 (Approved Document A) and the Building Regulations 2010 (Approved Document B).

3. The drawings shall be in accordance with the Building Regulations 2010 (Approved Document A) and the Building Regulations 2010 (Approved Document B).

4. The drawings shall be in accordance with the Building Regulations 2010 (Approved Document A) and the Building Regulations 2010 (Approved Document B).

5. The drawings shall be in accordance with the Building Regulations 2010 (Approved Document A) and the Building Regulations 2010 (Approved Document B).

6. The drawings shall be in accordance with the Building Regulations 2010 (Approved Document A) and the Building Regulations 2010 (Approved Document B).

7. The drawings shall be in accordance with the Building Regulations 2010 (Approved Document A) and the Building Regulations 2010 (Approved Document B).

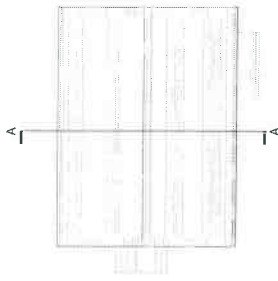
8. The drawings shall be in accordance with the Building Regulations 2010 (Approved Document A) and the Building Regulations 2010 (Approved Document B).

9. The drawings shall be in accordance with the Building Regulations 2010 (Approved Document A) and the Building Regulations 2010 (Approved Document B).

10. The drawings shall be in accordance with the Building Regulations 2010 (Approved Document A) and the Building Regulations 2010 (Approved Document B).



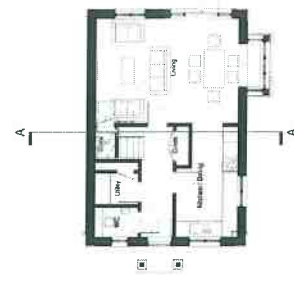
KEY 1:5000



Plot 1 - Roof
1:100



Plot 1 - 01
1:100



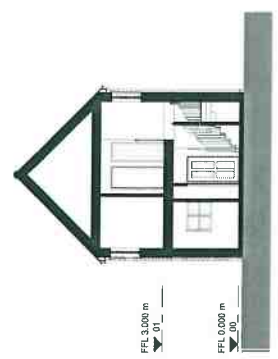
Plot 1 - 00
1:100



Plot 1 - Right
1:100



Plot 1 - Left
1:100



Plot 1 - Section A
1:100



Plot 1 - Front
1:100



Plot 1 - Rear
1:100

11	20/21/18	Planning Submission	JTP	DEC
	11/21/17	Final Draw Issue	JTP	DEC
Rev.	Date	Description	Drawn	Chkd

Client: Berkeley Homes Western Ltd
Berkeley
 Designed for life



Project: Abbey Barrn South

Drawing Title: Plot 1 - Plans, Sections and Elevations

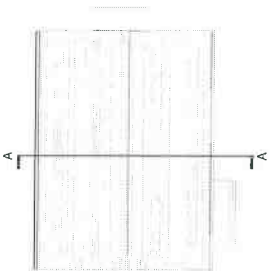
Scale: @A1: 1:100
 Drawing No: PLOT
 Revision: 11
 Scale bar: 0 1 2 3 4 5 m

Notes

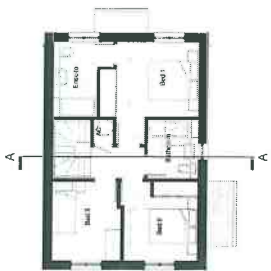
1. The user must read this drawing, and the specifications for materials and construction, in conjunction with the relevant building regulations and any other applicable legislation. The user must also read the relevant planning and building regulations. Any discrepancies between drawings, specifications and any other applicable legislation shall be resolved in favour of the most stringent requirements. This drawing is the work prepared by the architect and is not to be used for any other purpose without the written consent of the architect.

2. This drawing is prepared for the specific project and is not to be used for any other purpose without the written consent of the architect. It is not to be used for any other purpose without the written consent of the architect.

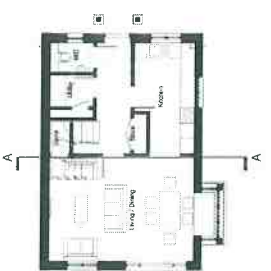
3. The architect is not responsible for any errors or omissions in this drawing or any other drawings or specifications. The user must read this drawing and the specifications in conjunction with the relevant building regulations and any other applicable legislation.



Plot 30 - Roof
1:100



Plot 30 - 01
1:100



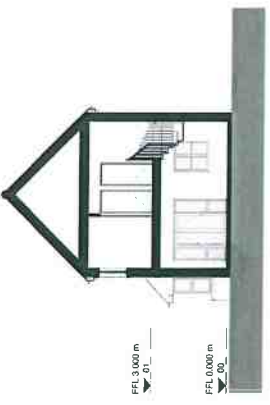
Plot 30 - 00
1:100



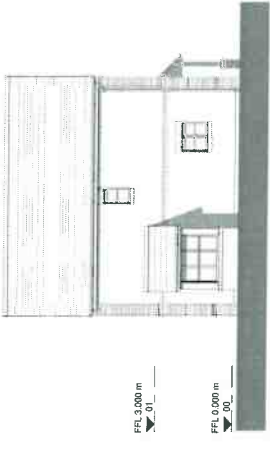
Plot 30 - Right
1:100



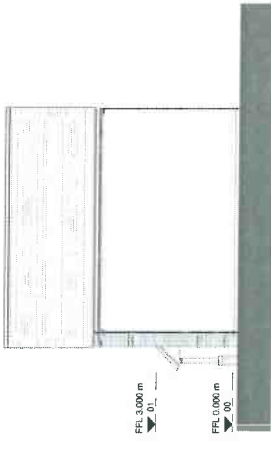
Plot 30 - Left
1:100



Plot 30 - Section A
1:100



Plot 30 - Front
1:100



Plot 30 - Rear
1:100

11	20/09/18	Planning Submission	JTP	DEC
Rev	Date	Description	Drawn	Check
			JTP	DEC
Drawing Status: Planning				

Client: Berkeley Homes Western Ltd
Berkeley
 Designed for life

22-25 Great Sutton Street
 London, EC1V 0DB
 Tel: 020 7493 7700
 www.berkeley.co.uk

Project: Abbey Barn South

Drawing Title: Plot 30 - Plans, Sections and Elevations

Scale @ A1: 1:100 (See Plot 00318C)
 Drawing No: PL300
 Revision: 1.1

Scale Bar: 0 1 2 3 4 5 m

Notes

Do not scale from this drawing.

All dimensions shall be in accordance with the relevant Building Regulations and the relevant standards unless otherwise stated. All dimensions shall be in accordance with the relevant Building Regulations and the relevant standards unless otherwise stated.

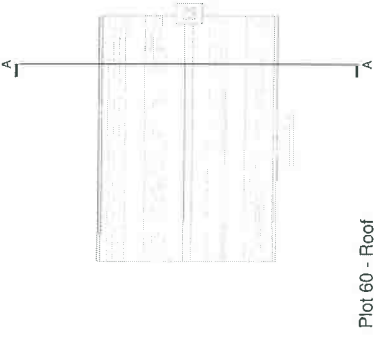
The drawings are the property of JTP and shall not be used for any other purpose without the written consent of JTP.

Any dimensions shown on this drawing are for information only and shall not be used for any other purpose without the written consent of JTP.

For further information please contact the relevant professional on the contact details below.



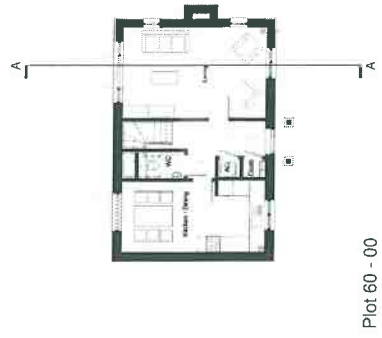
KEY 1:5000



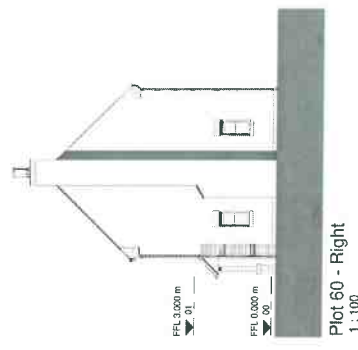
Plot 60 - Roof
1:100



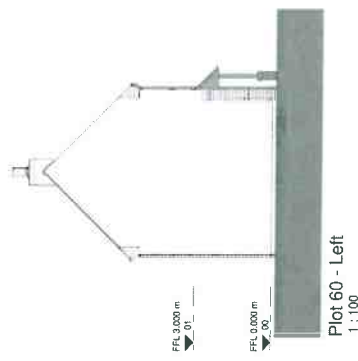
Plot 60 - 01
1:100



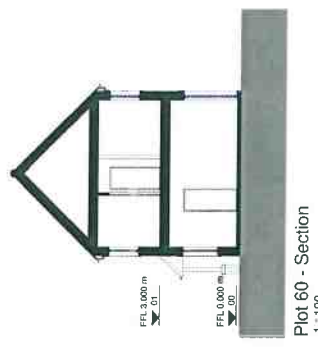
Plot 60 - 00
1:100



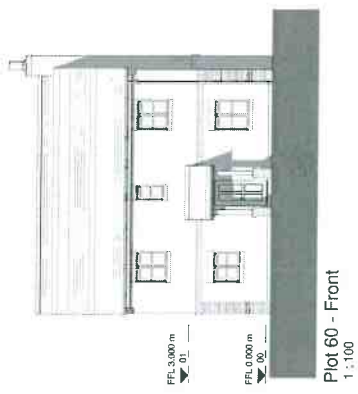
Plot 60 - Right
1:100



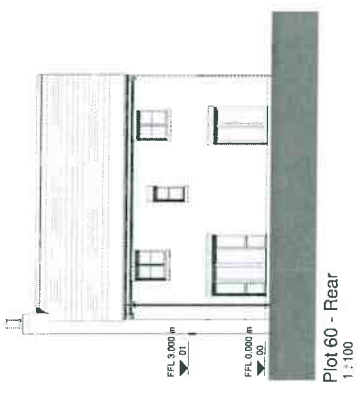
Plot 60 - Left
1:100



Plot 60 - Section
1:100



Plot 60 - Front
1:100



Plot 60 - Rear
1:100

2	09/18	Revise/Redesign	BC
	02/18	Final Issue	JTP/BC
Rev	Date	Description	Drawn Check
Drawing Status			
Planning			

Client: Berkeley Homes Western Ltd
Berkeley
 Designed for life

jtp
 Project:
 Abbey Barn South

Drawing Title:
Plot 60 - Plans, Sections and Elevations

Scale: 1:100
 Drawing No: PL60
 Revision: 2

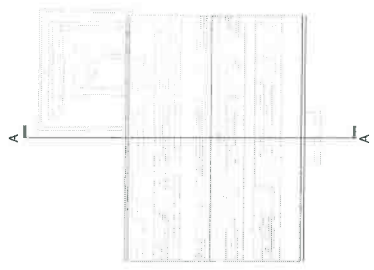


Scale Bar: 0 1 2 3 4 5 m

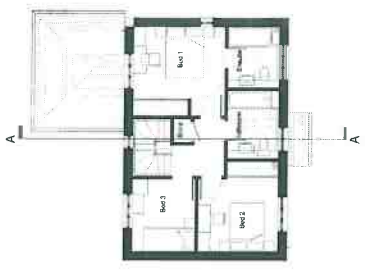
Notes

Do not take issue with drawings. All drawings are the property of JTP and the responsibility for taking and executing any work shown on drawings rests with the contractor. The contractor shall be responsible for any discrepancies between drawings, specifications and any other documents. The contractor shall be responsible for any discrepancies between drawings, specifications and any other documents. The contractor shall be responsible for any discrepancies between drawings, specifications and any other documents.

This drawing is prepared for the specific project (stage) and drawings shall not be used for any other project. The contractor shall be responsible for any discrepancies between drawings, specifications and any other documents. The contractor shall be responsible for any discrepancies between drawings, specifications and any other documents.



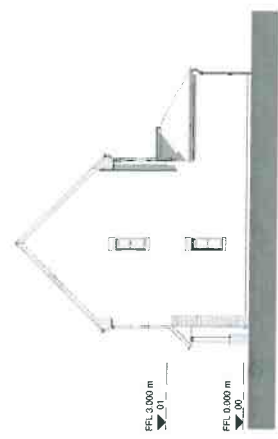
Plot 110 - Roof
1:100



Plot 110 - 01
1:100



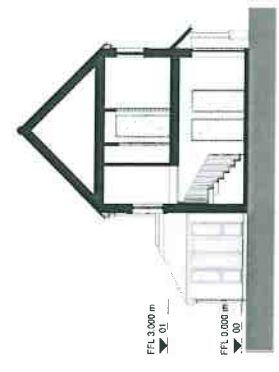
Plot 110 - 00
1:100



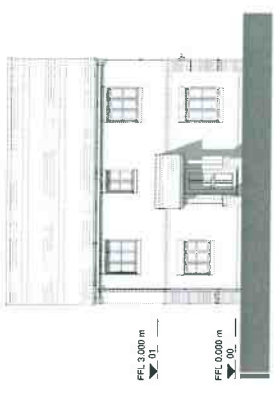
Plot 110 - Right
1:100



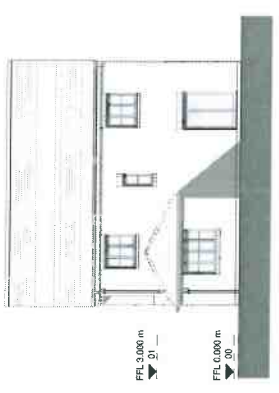
Plot 110 - Left
1:100



Plot 110 - Section A
1:100



Plot 110 - Front
1:100



Plot 110 - Rear
1:100

9 20/05/18 Planning Submission JTP REC
11/12/17 First Draft Issue JTP REC

Rev: | Date: | Description: | Drawn: | Check:

Drawing Status: |

Planning: |

Client: Berkeley Homes Western Ltd
Berkeley
Designed for: JTB

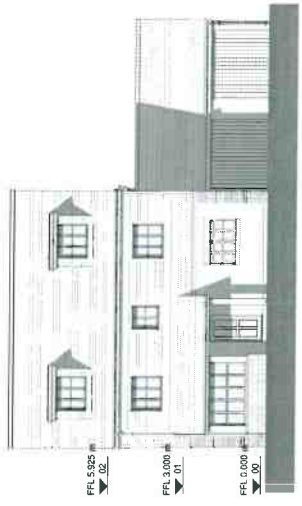
23-24 Chancery Street
London EC2M 3SL
www.jtb.co.uk

Project: Abbey Barn South

Drawing Title: Plot 110 - Plans, Sections and Elevations

Scale: 1:100 Job No: 00518C
Drawing No: PL110 Revision: 0
Scale Bar: 0 1 2 3 4 5 m

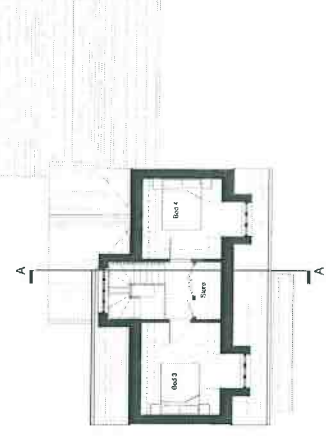
Note 4
 All work shall be in accordance with the Building Regulations and the Building Act 2004. The drawings shall be used for the purpose of the planning application only. The drawings shall not be used for any other purpose without the written consent of the architect. The drawings shall not be used for any other purpose without the written consent of the architect. The drawings shall not be used for any other purpose without the written consent of the architect.



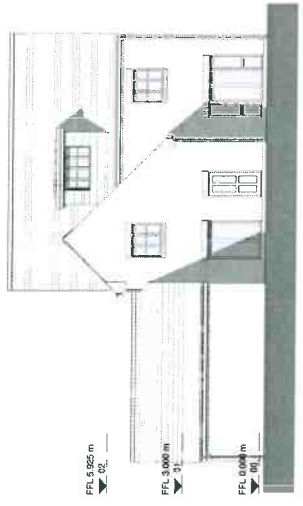
Plot 120 - Front
 1 : 100



Plot 120 - Right
 1 : 100



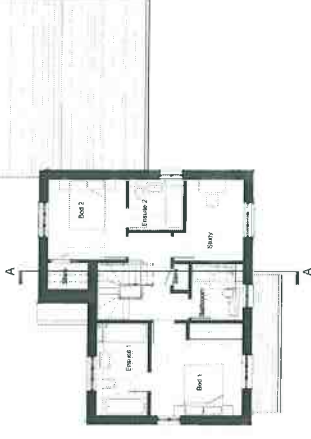
Plot 120 - 02
 1 : 100



Plot 120 - Rear
 1 : 100



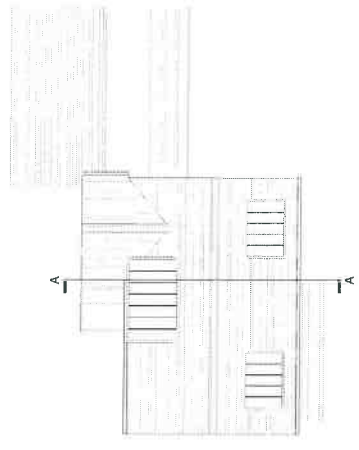
Plot 120 - Left
 1 : 100



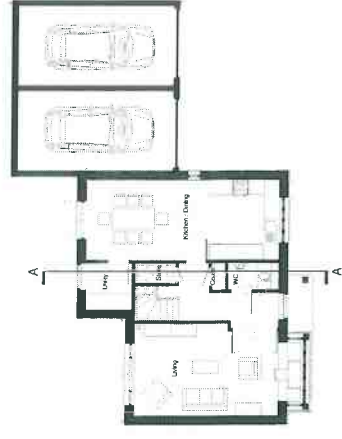
Plot 120 - 01
 1 : 100



Plot 120 - Section A
 1 : 100



Plot 120 - Roof
 1 : 100



Plot 120 - 00
 1 : 100

0	20/06/18	Revised Submission	JTP	ESC
	11/12/17	Final Draft Issue	JTP	ESC
Rev	Date	Description	Drawn	Check
Drawing Status: Planning				
Client: Berkeley Homes Western Ltd				
 Designed for life				
 Project: Abbey Barn South				
Drawing Title: Plot 120 - Plans, Sections and Elevations				
Scale: A3: 1 : 100 Drawing No: PL120 Revision: 9				
Scale bar: 0 1 2 3 4 5 m				

NOTES

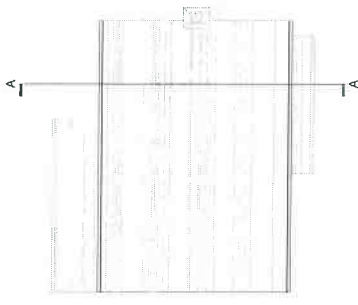
1. The client accepts full responsibility for the accuracy of the information provided in this drawing and any other drawings or documents referred to in this drawing. The client also accepts full responsibility for the accuracy of the information provided in this drawing and any other drawings or documents referred to in this drawing.

2. This drawing is prepared for the specific project shown on the Drawing Sheet. It is not to be used for any other project without the written consent of the architect.

3. The architect does not accept any liability for any loss or damage, whether direct or indirect, arising from the use of this drawing or any other drawings or documents referred to in this drawing.



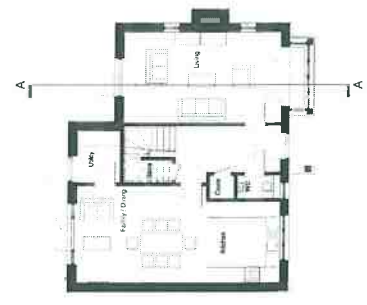
KEY 1:5000



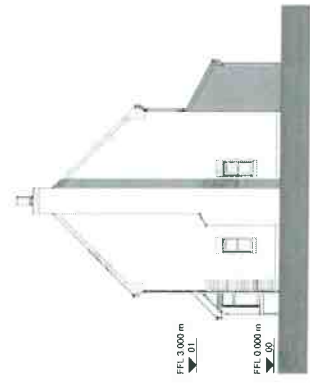
Plot 130 - Roof
1:100



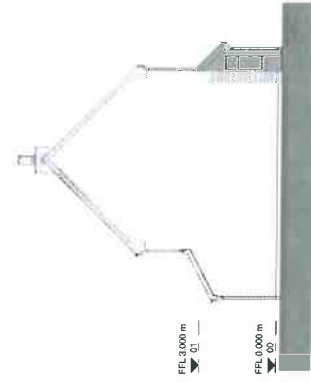
Plot 130 - 01
1:100



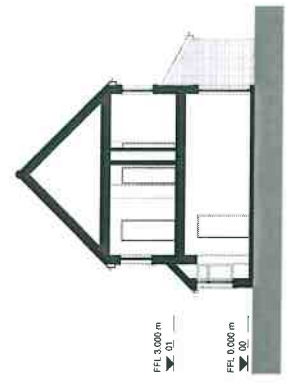
Plot 130 - 00
1:100



Plot 130 - Right
1:100



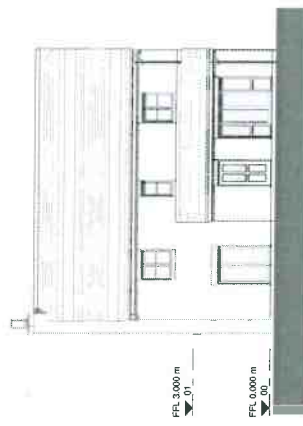
Plot 130 - Left
1:100



Plot 130 - Section A
1:100



Plot 130 - Front
1:100



Plot 130 - Rear
1:100

3	200518	Planning Submission	JTP	DEC
	11/12/17	Final Details	JTP	DEC
Rev	Date	Discipline	Drawn	CDS
Drawing Status: Planning				

Client: Berkeley Homes Western Ltd

Berkeley
Designed for life

jtp
1278 Great South Street
London, E14 0AA
www.jtp.co.uk

Project: Abbey Barn South

Drawing Title: Plot 130 - Plans, Sections and Elevations

Scale: 1:100
Drawing No: PL130
Revision: 3

Scale Bar: 0 1 2 3 4 5 m

Notes

1. All elevations are shown in perspective. The drawing is intended to provide a visual impression of the proposed development and is not to be used for construction purposes. The drawing is not to scale and is not a substitute for the architectural drawings. The drawing is not to be used for any other purpose without the written consent of the architect.

2. The drawing is not to be used for any other purpose without the written consent of the architect.

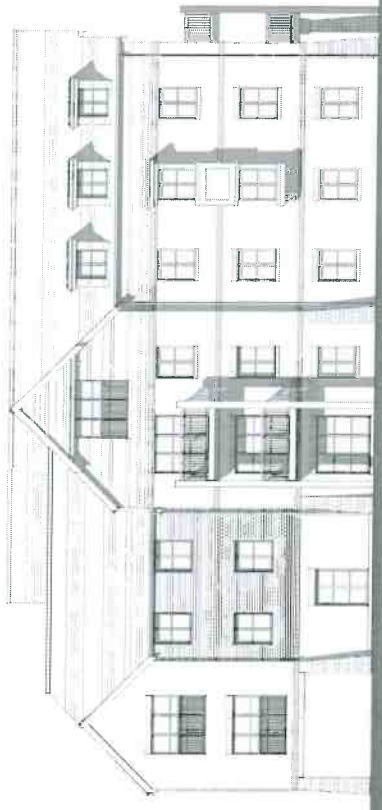
3. The drawing is not to be used for any other purpose without the written consent of the architect.

4. The drawing is not to be used for any other purpose without the written consent of the architect.

5. The drawing is not to be used for any other purpose without the written consent of the architect.

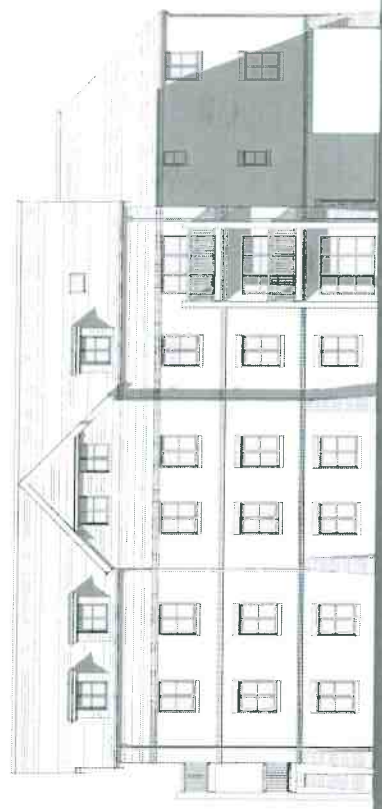


KEY 1:5000



- FFL 9,450 m
- FFL 8,300 m
- FFL 3,150 m
- FFL 0,000 m

North Elevation
1:100



- FFL 9,450 m
- FFL 8,300 m
- FFL 3,150 m
- FFL 0,000 m

South Elevation
1:100

Rev.	Date	Description	Drawn	Check
E	21.03.15	Planning Submission	RA	DEC
	17.11.17	For Issue	HA	DEC

PLANNING

Client: Berkeley Homes Western Ltd
Berkeley
 Designed for life



Project: Abbey Barn South

Block B - Elevations - Sheet 2

Scale: 0/1 | 1:100
 Drawing No: BB_04
 Scale Bar: 0 1 2 3 4 5m